

MONTHLY MEMBERSHIP PROGRESS REPORT

LOCATION MARYLAND

District 22 A

Results as of: 5/31/2023

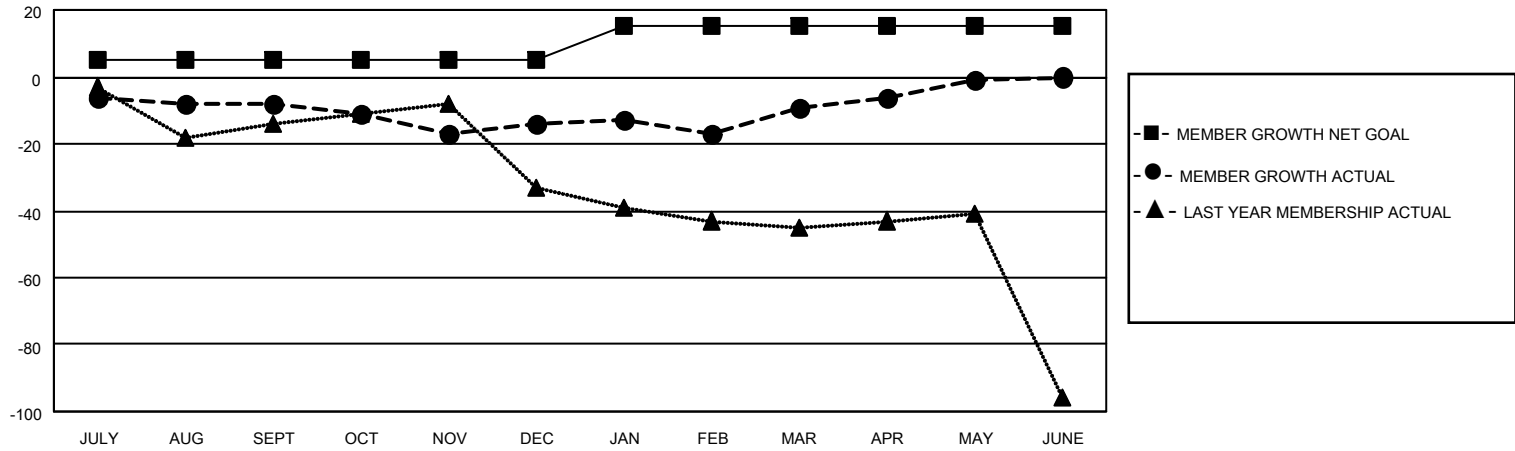
Clubs			
RESULTS FOR 2022-2023			
QUARTER	NEW CLUB GOAL	NEW CLUBS	DROPPED CLUBS
JULY/AUG/SEPT	0	0	0
OCT/NOV/DEC	1	0	0
JAN/FEB/MAR	0	0	0
APR/MAY/JUNE	1	0	0

Members			
RESULTS FOR 2022-2023			
QUARTER	MEMBER GROWTH NET GOAL	MEMBER GROWTH ACTUAL	DROPPED MEMBERS ACTUAL (including transfers)
JULY/AUG/SEPT	5	7	13
OCT/NOV/DEC	0	11	15
JAN/FEB/MAR	10	16	8
APR/MAY/JUNE	0	10	2

GOALS AND ACTUAL NEW CLUBS CUMULATIVE



GOALS AND ACTUAL MEMBERS CUMULATIVE



DROPPED CLUBS: 0

11 CLUBS OF 22 ADDED 1 OR MORE NEW MEMBERS

GENDER DISTRIBUTION

MALE	338 (62.48%)
FEMALE	203 (37.52%)
NON BINARY	0 (0.00%)
PREFER NOT TO ANSWER	0 (0.00%)

DROPPED MEMBERS

[CLICK HERE FOR CUMULATIVE MEMBERSHIP DATA](#)

DECEASED	10
CLUB CANCELLED	0
OTHER	28
TOTAL	38

TOTAL FAMILY UNIT MEMBERS	100
FAMILY MEMBERS PAYING HALF DUES	51